



Rachmi Maryda  
Ramyakim  
Assurance Division Head

May 2025

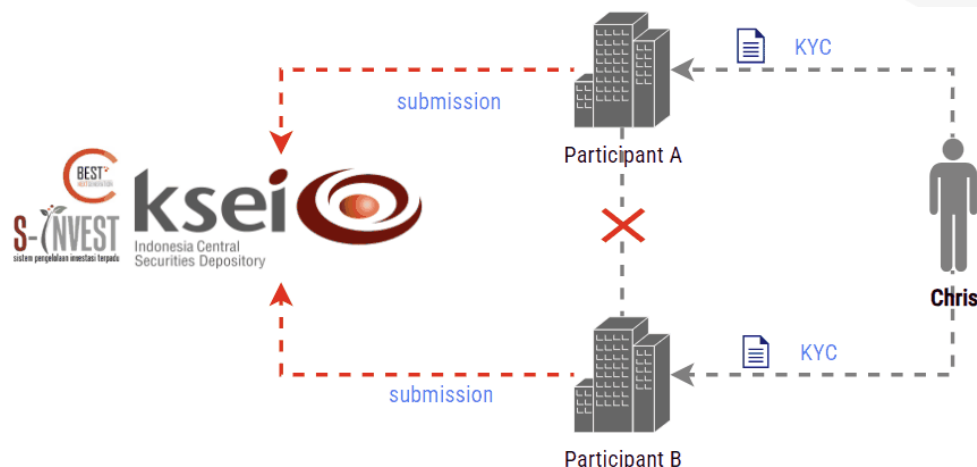


*PROPRIETARY - Any use of this material without specific permission of KSEI ([international.relations@ksei.co.id](mailto:international.relations@ksei.co.id)) is strictly prohibited*

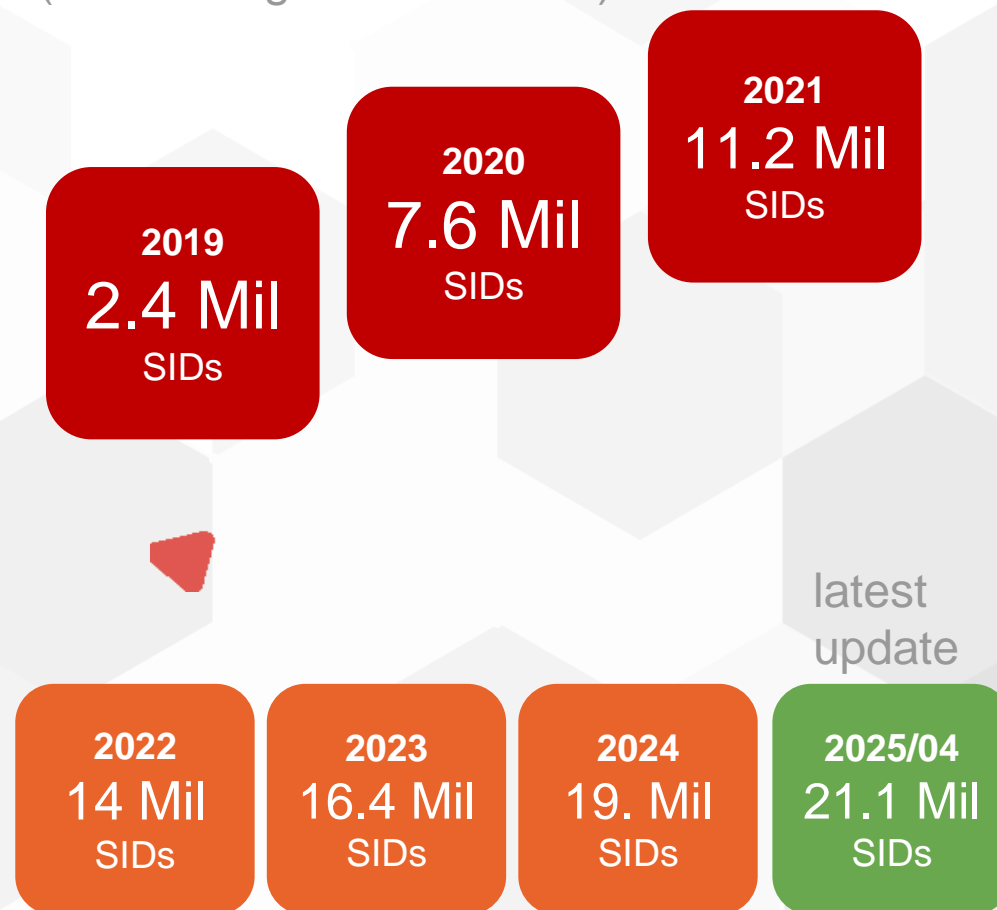
KSEI needs to

- maintain** the **unique** ID of investors or **SID** and the most updated data,
- manage** investor data using an integrated yet secure system

*Participants\** need to **update** their investor's profile and data/documents related regularly



The **growth** of investor  
(based on generated SIDs)



Using CORES (**C**entralized **I**nvester **D**ata **M**anagement **S**ystem) to **INCREASE**

## Investor Account

The effectiveness and efficiency of opening



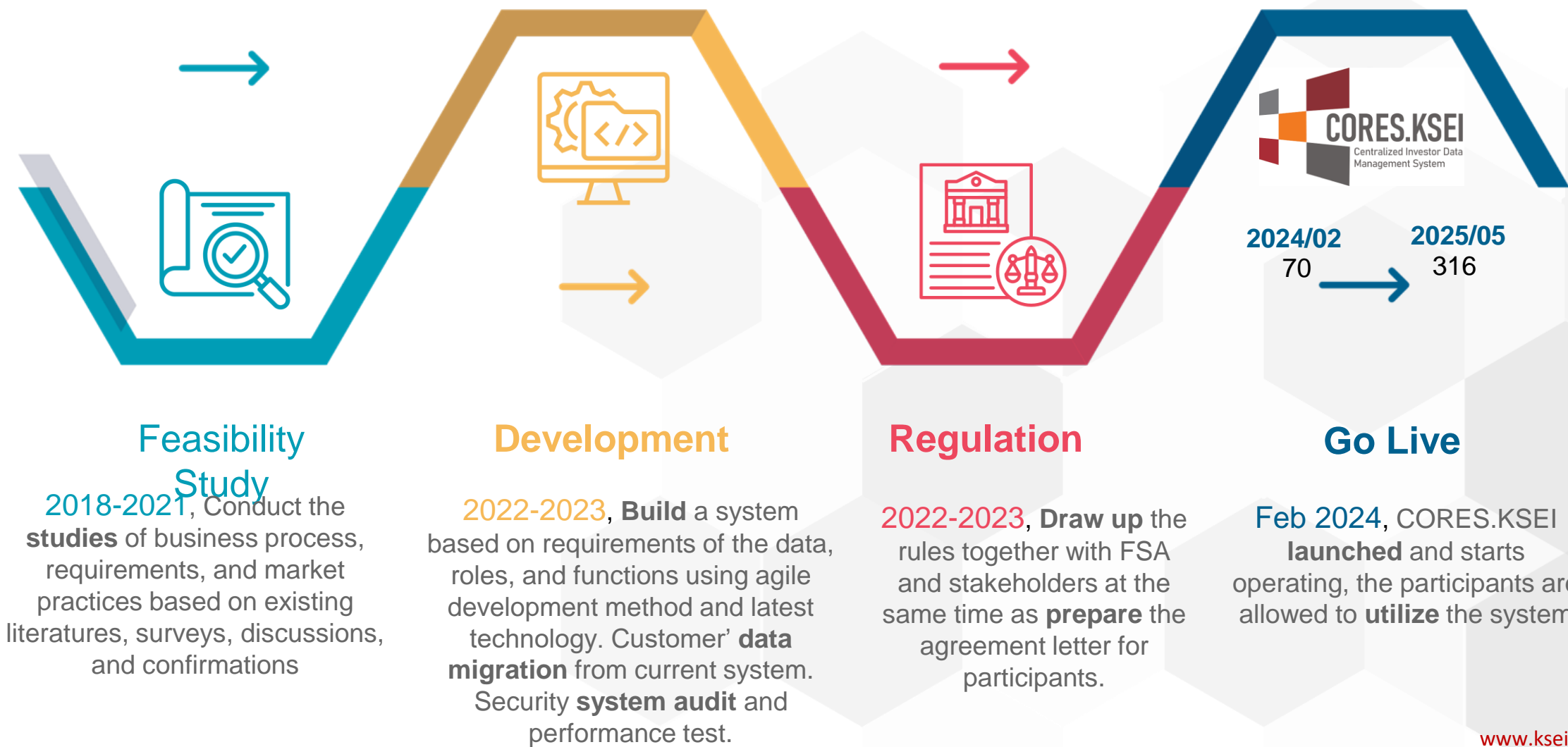
## Data Security and Confidentiality



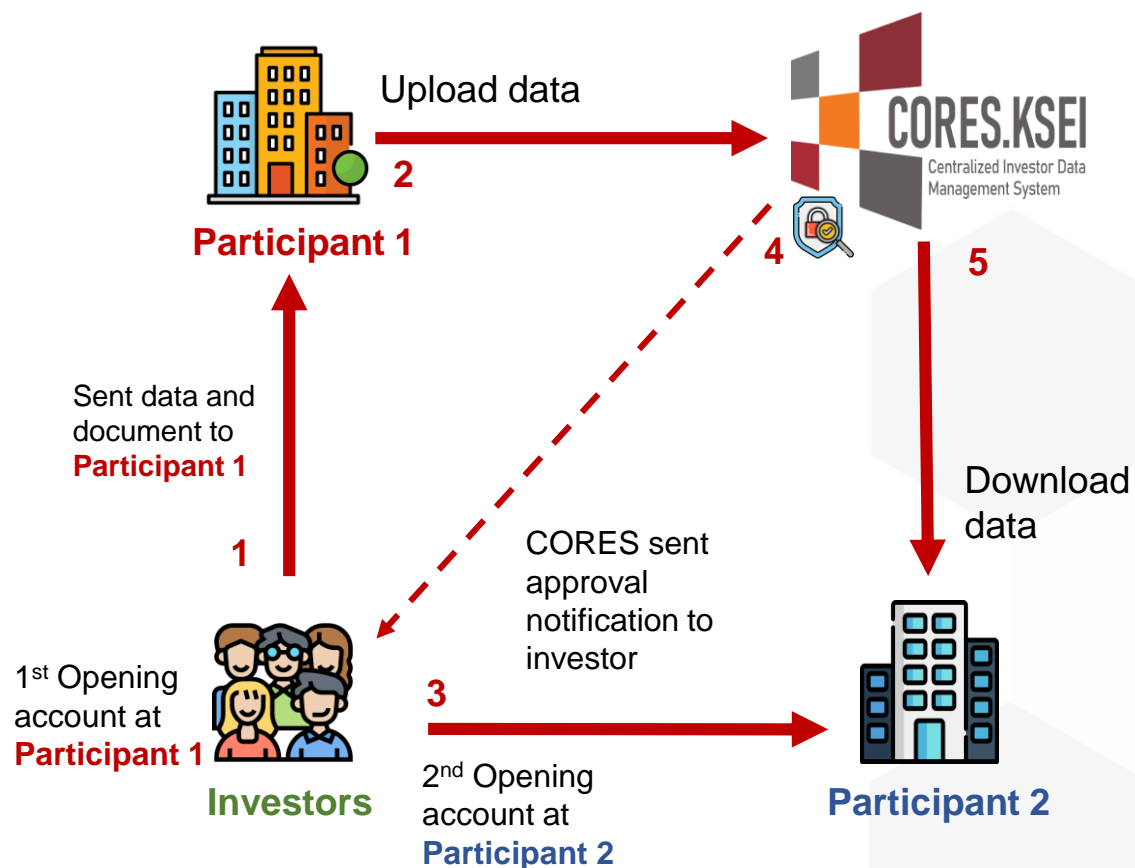
The efficiency of data dan document storage customer due diligence



# Implementation of KYC Administration System (CORES.KSEI)



# KYC Administration Concept



**CORES.KSEI** introduced the concept of **data sharing** among KSEI participants with the investor's consent.

- Investors do not need to repeatedly provide KYC data/documents.

## Web-based

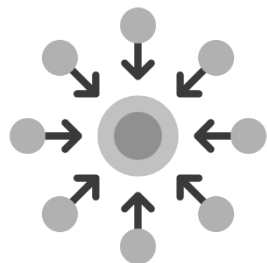
Does not require software installation, just additional configuration on the user's PC.

## Private network connection

Participants have to use the capital market integrated network to enhance data security.

## Diverse KYC data Input Mechanism

via screen (User Interface/UI), *upload*, API (*host-to-host*)



## Centralization

Static KYC data dan document centralization, Input through KSEI system:

1. CORES.KSEI
2. C-BEST
3. S-INVEST



## Retrieval

Sharing KYC data and documents through CORES.KSEI based on investor's consent.

Consent provided via :

1. Email (link confirmation)
2. Access (confirmation) approval / *Passcode*



## Notification

Notification of updating customer data and/or documents to CORES.KSEI User where the investor is registered .

Notification via email



## Data in CORES.KSEI:

1. Investor Static Data in C-BEST / S-INVEST
2. Other Data : Investment Information, Risk Profile , Beneficial Owner , FATCA, etc.



## Individual Documents in CORES.KSEI

1. Identity Number (mandatory for individual domestic)
2. Passport (mandatory for individual foreign)
3. KITAS / Limited stay permit card (optional for foreign)

## Institutional Documents in CORES.KSEI

1. Tax number
2. Documents that show date of establishment (based on investor type ): Deed Establishment , KIK, Pension Fund Regulations, Business Registration Number, etc.
3. Article of association (optional)
4. Other documents (optional : Business Registration Number, financial report, etc.)



PT Kustodian Sentral Efek Indonesia  
Gedung Bursa Efek Indonesia Tower 1 Lt.5  
Jl. Jend Sudirman Kav. 52-53, Jakarta  
12190  
Call Center: (62-21) 515 2855  
Toll Free: 0800 186 5734

 [www.ksei.co.id](http://www.ksei.co.id)

 [@ksei.official](https://www.instagram.com/ksei.official)

 [KSEI](https://www.facebook.com/KSEI)

 [@OfficialKSEI](https://twitter.com/OfficialKSEI)

 Kustodian Sentral Efek Indonesia

 Kustodian Sentral Efek Indonesia